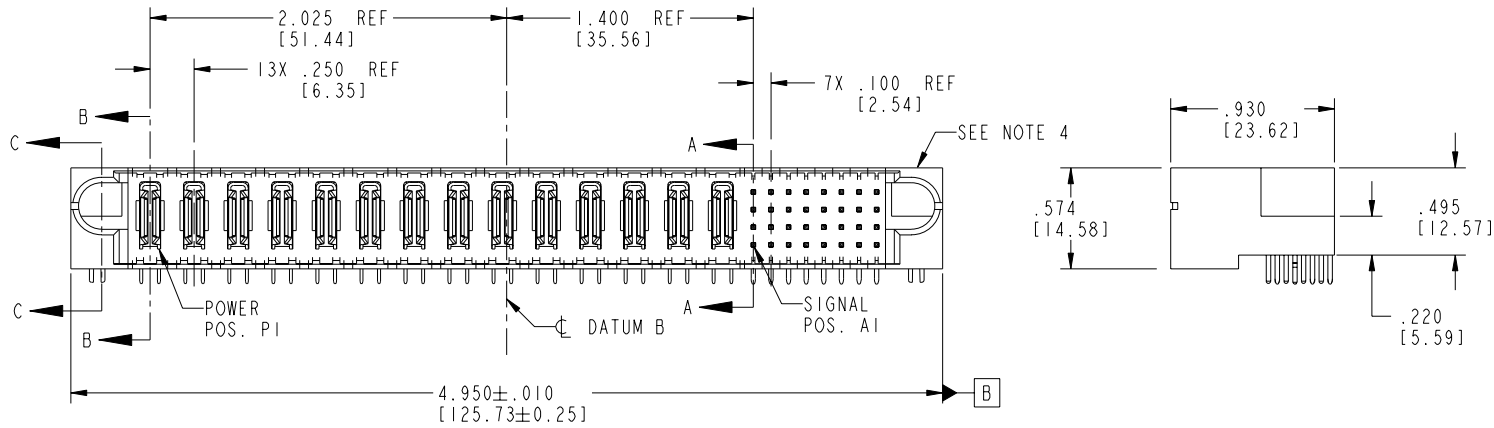
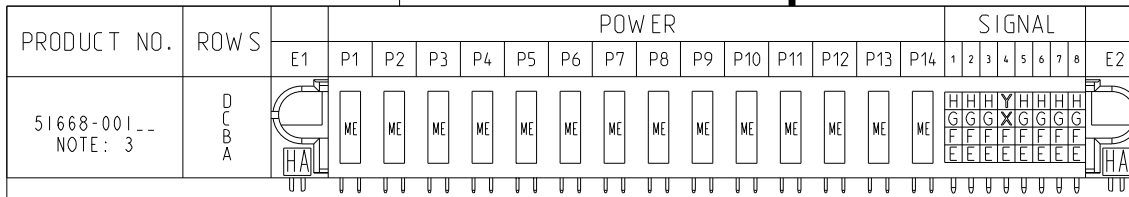


Tous droits strictement réservés. Reproduction ou communication à des tiers interdite sous quelque forme que ce soit sans autorisation écrite du propriétaire. Propriété de c FCI. Droits de reproduction FCI.

All rights strictly reserved. Reproduction or issue to third parties in any form whatever is not permitted without written authority from the proprietor. Property of FCI. Copyright FCI.



CODE	DIM "M" MATING LENGTH	CONTACT TYPE
E	.220 [5.59]	SIGNAL
F	.220 [5.59]	SIGNAL
G	.220 [5.59]	SIGNAL
H	.220 [5.59]	SIGNAL
X	.170 [4.32]	SIGNAL
Y	.170 [4.32]	SIGNAL
ME	.315 [8.00]	POWER
HA	N/A [N/A]	HOLD-DOWN

mat'l code				SEE NOTE 2		tolerances unless otherwise specified		CUSTOMER		 www.fciconnect.com	
ltr	ecn no.	dr	date	linear	projection	COPY		title		14P + 32S	
A	V02392	JRW	10/09/00	linear	projection	COPY		title		RIGHT ANGLE SOLDER HEADER	
B	V03-0248	TAB	03/19/03	linear	projection	COPY		title		RIGHT ANGLE SOLDER HEADER	
C	V03-0536	MEM	5/9/03	angles	projection	COPY		title		RIGHT ANGLE SOLDER HEADER	
D	V03-0671	MEM	6/13/03	dr	projection	COPY		title		RIGHT ANGLE SOLDER HEADER	
E	DG05-0300	GuoJM	08/26/05	engr	projection	COPY		title		RIGHT ANGLE SOLDER HEADER	
F	DG06-0011	CS	01/09/06	chr	projection	COPY		title		RIGHT ANGLE SOLDER HEADER	
				appd	projection	COPY		title		RIGHT ANGLE SOLDER HEADER	
sheet index		revision	F	F	F	F	F	F	product family		code
sheet		sheet	1	2	3	4			PwrBlade		213
									size		sheet
									A		1 of 4
									51668		
									scale		
									1:1		
									A		
									cage code		
									22526		4

Pro/E

PDM: Rev:F

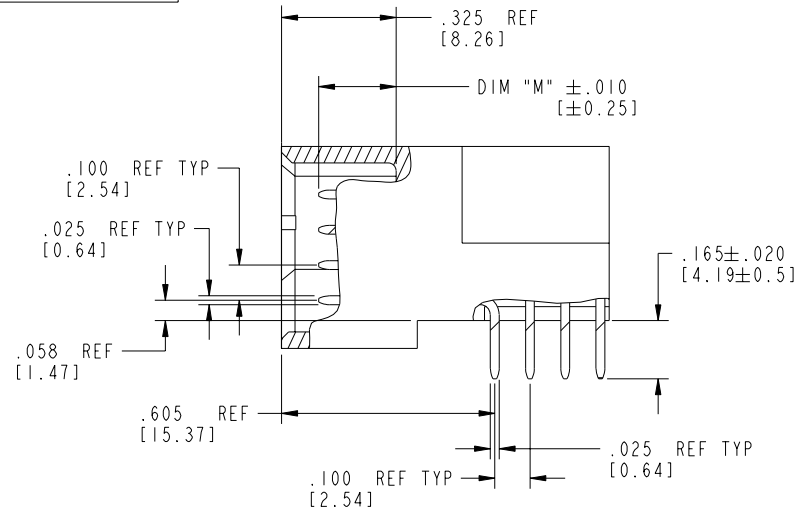
STATUS:Released

Printed: Aug 11, 2007

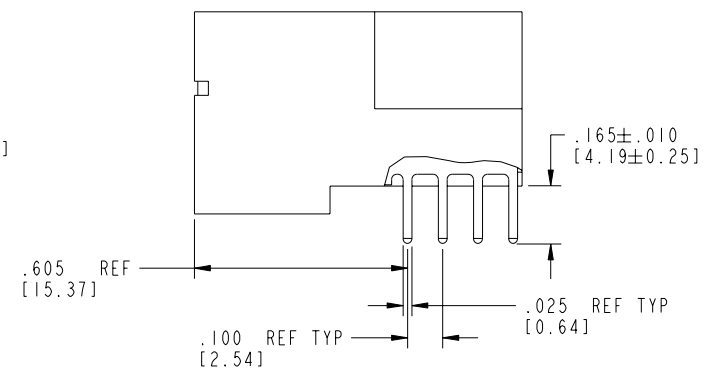
Tous droits strictement réservés. Reproduction ou communication à des tiers interdite sous quelque forme que ce soit sans autorisation écrite du propriétaire. Propriété de FCI. Droits de reproduction FCI.

All rights strictly reserved. Reproduction or issue to third parties in any form whatever is not permitted without written authority from the proprietor. Property of FCI. Copyright FCI.

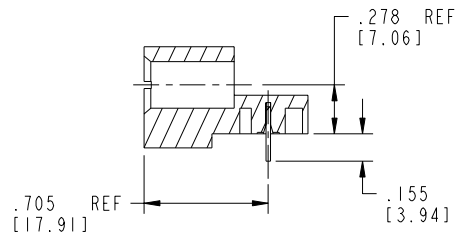
PRODUCT NUMBER  
51668-001\_\_  
NOTE: 3



BROKEN-OUT SECTION A-A  
SCALE 2:1



BROKEN-OUT SECTION B-B  
SCALE 2:1



SECTION C-C

mat'l code		SEE NOTE 2		tolerances unless otherwise specified		CUSTOMER		 www.fciconnect.com	
ltr	ecn no.	dr	date	linear	.XX±.01/0.X±0.3	COPY		projection	title
F					.XXX±.005/0.XX±0.13				14P + 32S
				angles	.XXXX±.0020/0.XXX±0.051				RIGHT ANGLE SOLDER HEADER
					0°±2°				product family
				dr	T. BRUNGARD 03/19/03	INCH/MM			PwrBlade
				enr	M. MOSTOLLER 03/19/03	scale		A	code
				chr	M. MOSTOLLER 03/19/03	1:1			213
				appd	M. MOSTOLLER 03/19/03				sheet
sheet index	revision sheet								2 of 4

cage code 22526

Pro/E

PDM: Rev:F

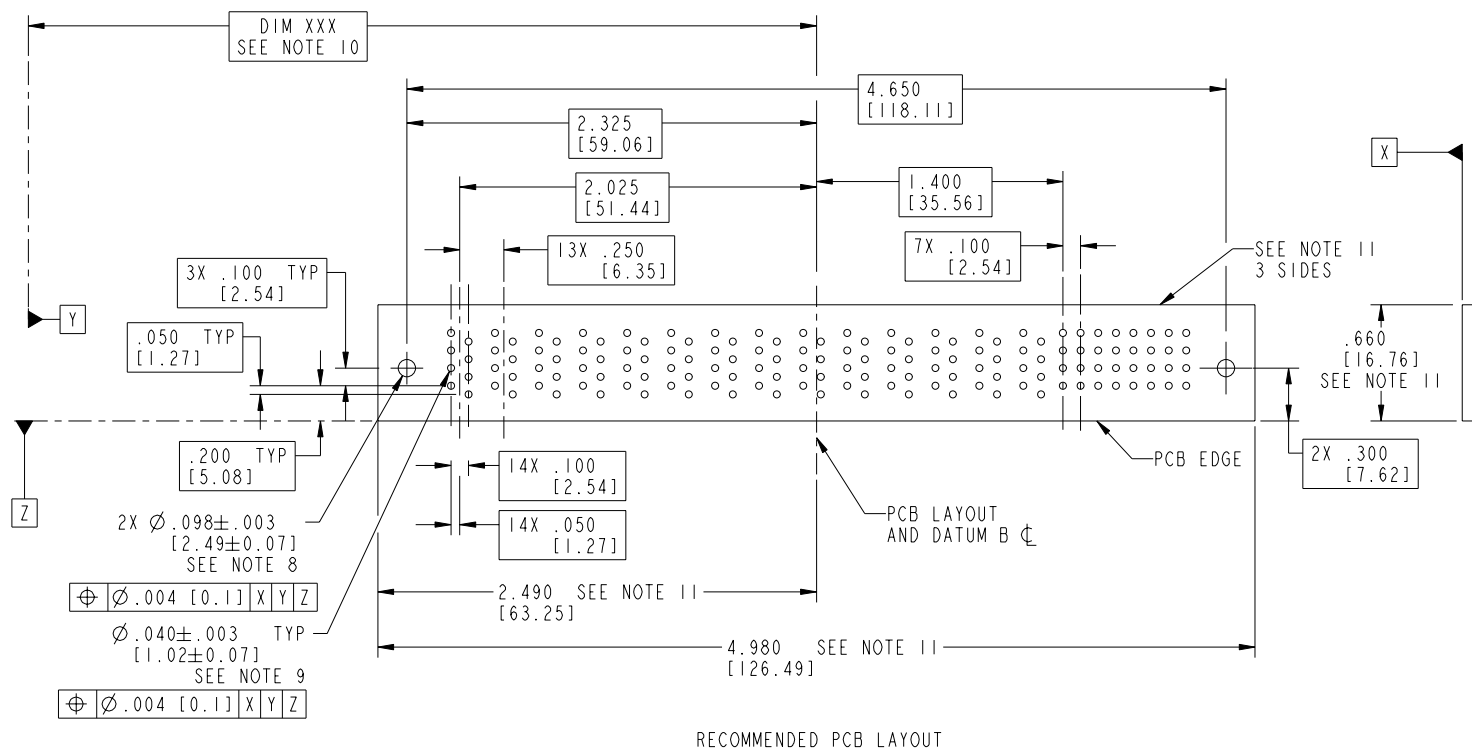
STATUS: Released

Printed: Aug 11, 2007

Tous droits strictement réservés. Reproduction ou communication a des tiers interdite sous quelque forme que ce soit sans autorisation écrite du propriétaire. Propriété de c FCI. Droits de reproduction FCI.

All rights strictly reserved. Reproduction or issue to third parties in any form whatever is not permitted without written authority from the proprietor. Property of FCI. Copyright FCI.

PRODUCT NUMBER  
51668-001\_\_  
NOTE: 3



RECOMMENDED PCB LAYOUT

mat'l code				SEE NOTE 2		tolerances unless otherwise specified		CUSTOMER		 www.fciconnect.com	
ltr	ecn no.	dr	date	linear	.XX±.01/0.X±0.3	projection	COPY		title 14P + 32S		
F				angles	.XXX±.005/0.XX±0.13			RIGHT ANGLE SOLDER HEADER			
				dr	0°±2°			product family PwrBlade		code 213	
				engr	T. BRUNGARD 03/19/03	INCH/MM		size 51668		sheet 3 of 4	
				chr	M. MOSTOLLER 03/19/03	scale 1:1					
				appd	M. MOSTOLLER 03/19/03						
sheet index	revision sheet										

cage code 22526

Pro/E

PDM: Rev:F

STATUS:Released

Printed: Aug 11, 2007

Tous droits strictement réservés. Reproduction ou communication à des tiers interdite sous quelque forme que ce soit sans autorisation écrite du propriétaire. Propriété de c FCI. Droits de reproduction FCI.



All rights strictly reserved. Reproduction or issue to third parties in any form whatever is not permitted without written authority from the proprietor. Property of FCI. Copyright FCI.

1 | 2

3 |

4

PRODUCT NUMBER  
51668-001\_\_  
NOTE: 3

NOTES:

1. DIMENSIONS AND TOLERANCES ARE IN ACCORDANCE WITH ASME Y14.5M, 1994 UNLESS OTHERWISE SPECIFIED.

CONNECTOR NOTES:

- 2. HOUSING MATERIAL: UL 94 V-0 GLASS FILLED HIGH-TEMP THERMOPLASTIC  
POWER CONTACT MATERIAL: COPPER ALLOY  
SIGNAL PIN MATERIAL: COPPER ALLOY
- 3. PLATING:  
51668-001,51668-001LF,PLATING SPEC SEE PRINT:100064183.
- 4. MANUFACTURER'S NAME, P/N, AND DATE CODE TO APPEAR ON THIS SURFACE.
- 5. PRODUCT SPECIFICATION GS-12-149.  
APPLICATION SPECIFICATION BUS-20-067.

6. PACKAGED IN TRAYS.

PCB NOTES:

- 7. ALL HOLE DIAMETERS ARE FINISHED HOLE SIZE.
- 8. MOUNTING HOLES, WHERE APPLICABLE, ARE UNPLATED.
- 9.  $\varnothing .0453 \pm .0010$  [1.151 $\pm$ 0.025] DRILLED HOLES PLATED WITH .0003 [0.008] MIN SnPb OVER .001 [0.03] TO .003 [0.08] Cu PLATING TO ACHIEVE  $\varnothing .040 \pm .003$  [1.02 $\pm$ .07] HOLE.
- 10. "DIM XXX" TO BE DETERMINED BY THE CUSTOMER.
- 11. CONNECTOR KEEP-OUT ZONE.

mat'l code				SEE NOTE 2		tolerances unless otherwise specified		CUSTOMER		 www.fciconnect.com	
ltr	ecn no.	dr	date	linear	.XX+ .01/0.X+0.3	projection		title 14P + 32S			
F					.XXX+ .005/0.XX+0.13			RIGHT ANGLE SOLDER HEADER			
				angles	XXXX+ .0020/0.XXX+0.051			product family PwrBlade		code 213	
				dr	0+2°	scale 1:1		size A		sheet 4 of 4	
				enrg	T. BRUNGARD 03/19/03			51668			
				chr	M. MOSTOLLER 03/19/03						
				appd	M. MOSTOLLER 03/19/03						
sheet index	revision sheet										

A

A

B

B

1 | 2

3 |

4

Pro/E

cage code 22526